

Facility Photo Reference Guide

Purpose

This Photo Reference Guide is intended to assist Offerors in understanding general existing site conditions for the Project ID Groups included in this RFP.

The images are provided for reference and estimating purposes only. Not all projects or conditions are represented. Final scope and site conditions must be verified by the Contractor prior to execution.

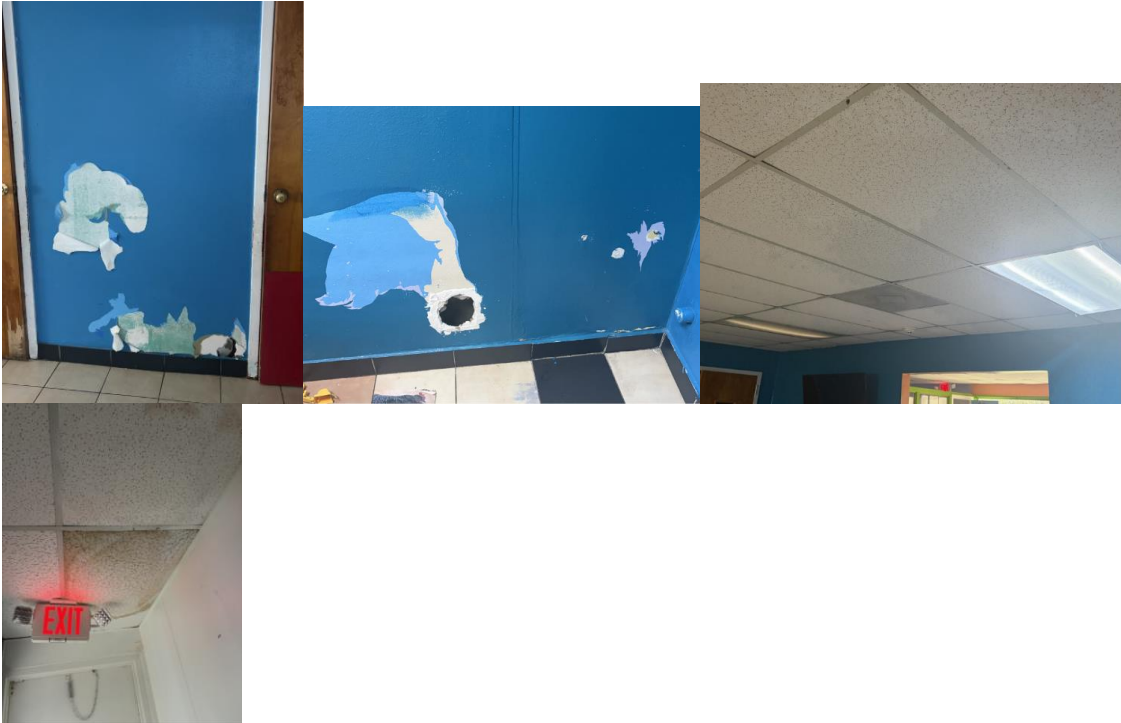
Instructions for Offerors

- Photos are organized by **service category** → **Project ID Group** → **ZIP code**.
- Conditions shown reflect observations at the time of assessment and may have changed.
- Images are representative and should not be assumed to capture all site conditions.
- Offerors are responsible for conducting site verification and confirming all dimensions, quantities, and conditions prior to submitting pricing and performing work.

SECTION 1: FACILITY FINISHES AND SURFACE IMPROVEMENTS

Project IDs: FSS-PKLA-20, 22

Scope: Exterior painting (priority); interior painting (~5,100 sq ft; café and Pre-K first); full ceiling tile replacement



Project IDs: FSS-KTA-45, 46, 646

Scope: Interior painting (~3,500 sq ft); flooring replacement (priority areas + building-wide); ceiling tile replacement; repaint front window for sun blocking





Project IDs: FSS-LCLC-125, 743

Scope: Ceiling repair (investigate cracks/source); full interior repaint (~1,500–2,000 sq



Project ID: FSS-SSCC-153

Scope: New flooring installation throughout building



Project IDs: FSS-RLA-258, 259, 261

Scope: Ceiling repair (leaks/cracks); full flooring replacement; interior painting



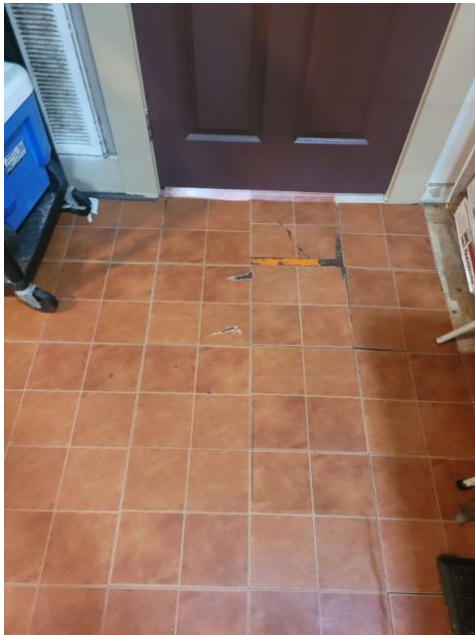
Project ID: FSS-RFP-282

Scope: Repair toddler vinyl wood flooring; address gaps and uneven sections



Project IDs: FSS-NKK-299, 300

Scope: Replace ceiling tiles (entry area); replace kitchen flooring (LVP possible); replace classroom carpet



Project IDs: FSS-SELC-313, 316

Scope: Ceiling repairs (hallway, 3YO, 4YO rooms); flooring replacement (dining + 3 classrooms)



Project IDs: FSS-JLC-330, 331, 641

Scope: Ceiling repairs; flooring leveling/repair; interior painting; exterior/equipment surface painting; ceiling painting





Section 2: Concrete Improvements and Site Surface Repairs

Project ID: FSS-RC-12

Scope: Replace cement walkway (approx. 3' x 10') and full replacement of two-car driveway; address drainage and standing water concerns



Project ID: FSS-CK-444

Scope: Repair chipped exterior concrete; install sidewalk connection to curb area



Project ID: FSS-JLC-723

Scope: Repair or replace broken concrete sidewalk in children's play area



Attachment 3: Door Installation, Repair, and Replacement Services

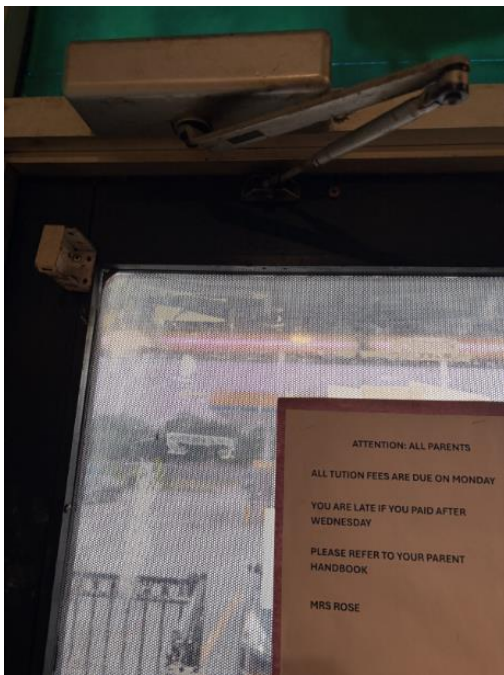
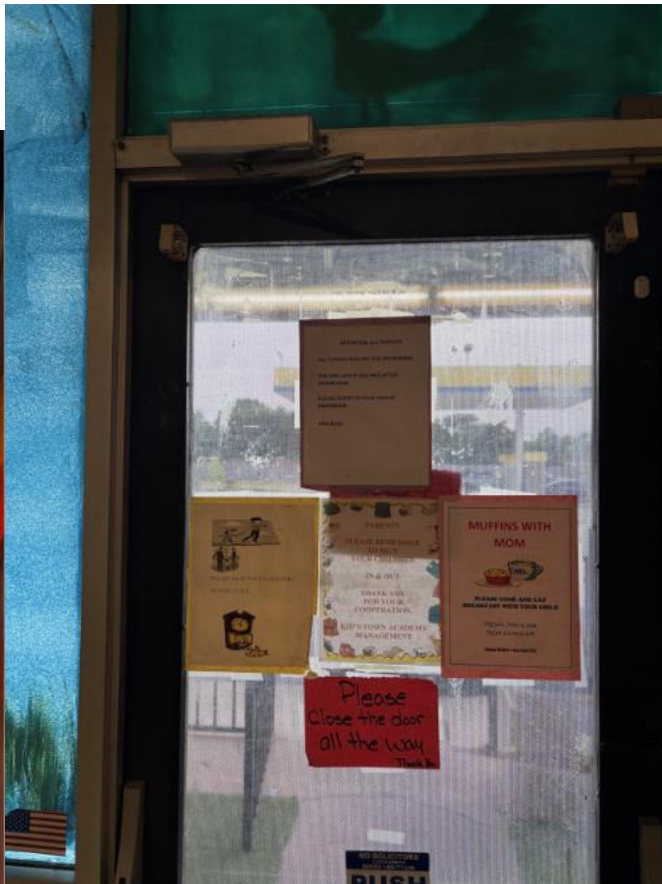
Project IDs: FSS-KCKLC-41, FSS-KCKLC-727

Scope: Install entry door hardware including door closers and panic bars; install two (2) bathroom doors; install tinted glass and metal entry door with panic bar



Project ID: FSS-KTA-56

Scope: Replace or repair front door; install panic bar; address hydraulic door components; upgrade from damaged hollow door to durable entry system



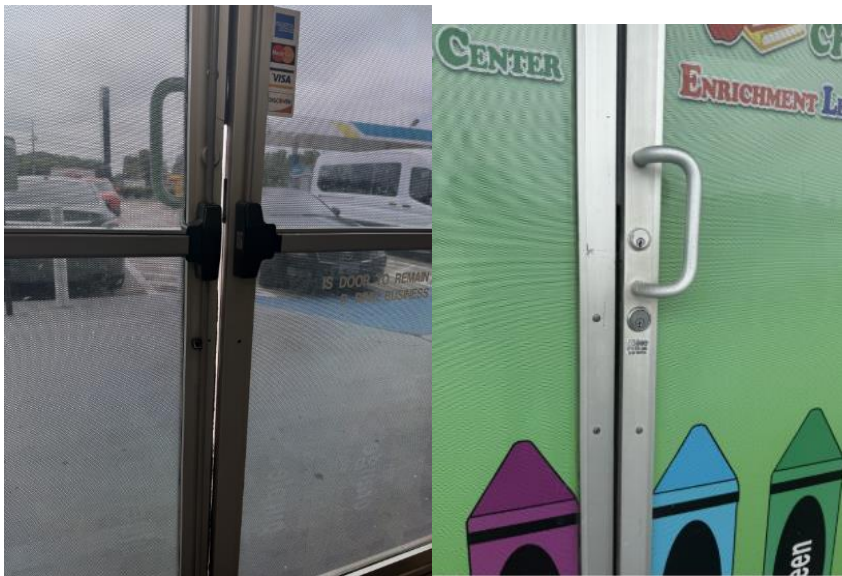
Project ID: FSS-HKA-147

Scope: Repair one (1) door and provide installation support



Project IDs: FSS-ABCELC-280, FSS-ABCELC-707

Scope: Replace back door (gray); replace front door; install four (4) interior half doors



Project IDs: FSS-MLLLC-572, FSS-MLLLC-573

Scope: Install hydraulic door systems and pinch guards; replace deteriorated exterior metal doors



Project ID: FSS-RFAR-753

Scope: Install interior door between infant room; half-visibility design with plexiglass and sound-reducing framing



Attachment 4: Fencing, Gates, and Perimeter Improvements

Project ID: FSS-RC-16

Scope: Replace approximately 17 cedar boards on rear fencing to restore secure boundary



Project ID: FSS-KTA-49

Scope: Replace chain-link fencing (~10 ft) around air conditioning unit



Project ID: FSS-KSLA-63

Scope: Install new wooden perimeter fence



Project ID: FSS-CMSKC-76

Scope: Repair fence by replacing and welding metal bar



Project IDs: FSS-AACCC-117, FSS-AACCC-123

Scope: Repair two front metal gates; install ADA ramp



Project ID: FSS-LCLC-132

Scope: Install infant play area fencing with gate (approx. 12x12–15x15)



Project ID: FSS-SILECC-168

Scope: Install combination/punch locks and repair gaps in chain-link gates

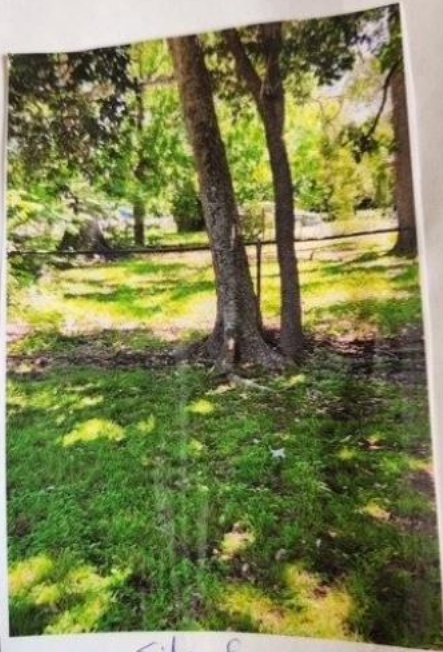
Project ID: FSS-RFAR-294

Scope: Repair chain-link fencing along building side



Project ID: FSS-ASRHC-368

Scope: Install higher wooden fencing and additional iron rail fencing



Side fence



Side front fence



Side back fence



fence by playground

Scope: Install fencing for infant patio and improve gate security



Project ID: FSS-GA-612

Scope: Replace damaged playground fencing



Project ID: FSS-LEA-653

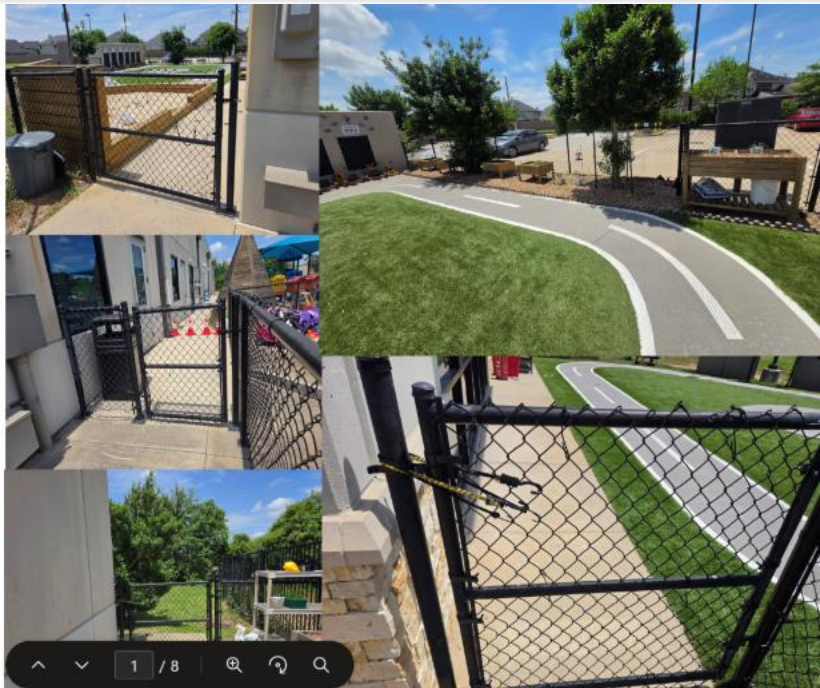
Scope: Install 8' privacy fence and replace six gates



Outside 8' White privacy fence of all playground

Five (5) New Gates or Latches for Gates for Licensing Compliance.

Gates are now required to self-latch, ex:



Project ID: FSS-SELC-681

Scope: Replace damaged or missing fencing along back and sides



Attachment 5: HVAC Systems, Cooling, and Air Quality Improvements

Project ID: FSS-KTA-47

Scope: Replacement of intake and output vent covers



Project ID: FSS-NKK-301

Scope: Replace two (2) window A/C units



Project ID: FSS-SEL-314

Scope: Inspect HVAC system (3-ton and 2.5-ton units; 2007)



Project ID: FSS-ONBA-408

Scope: Repair existing window/portable unit; office unit referenced (Model: MZ-UGL27-D91B; est. \$1,899.99)



Attachment 6: Landscaping, Playground Surfacing, and Outdoor Safety Improvements

Project ID(s): FSS-AACCC-118, 693

Scope: Mulch and playground surfacing; infant area matting



Project ID(s): FSS-LCLC-128, 745, 746

Scope: Mulch, grass replacement, leveling, and border repair



Project ID(s): FSS-GGA-235, 635

Scope: Artificial turf and impact mats



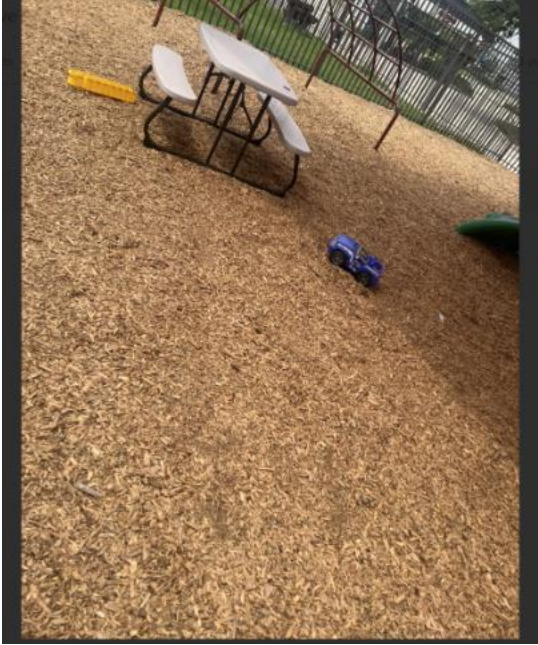
Project ID(s): FSS-BLD-394, 630

Scope: Ground cover installation, root trimming, and impact mats



Project ID(s): FSS-CK-443, 716

Scope: Resodding and replacement of mulch with rubber mulch



Project ID(s): FSS-LEA-466

Scope: Mulch replacement



Project ID(s): FSS-RLA-506

Scope: Mulch and playground surfacing



Project ID(s): FSS-MLLLC-576

Scope: Impact mats



Project ID(s): FSS-SOHM-588

Scope: Seventeen (17) impact mats



Project ID(s): FSS-WDC-600

Scope: Ground cover for two playground; mulch or rubber mulch



Project ID(s): FSS-GA-614

Scope: Mulch replenishment



Project ID(s): FSS-ASRHC-626

Scope: Artificial turf installation



Project ID(s): FSS-KTA-648

Scope: Rubber mats



Project ID(s): FSS-RC-669, 762

Scope: Impact mats and drainage improvements



Project ID(s): FSS-SILECC-677

Scope: Toddler surfacing improvements



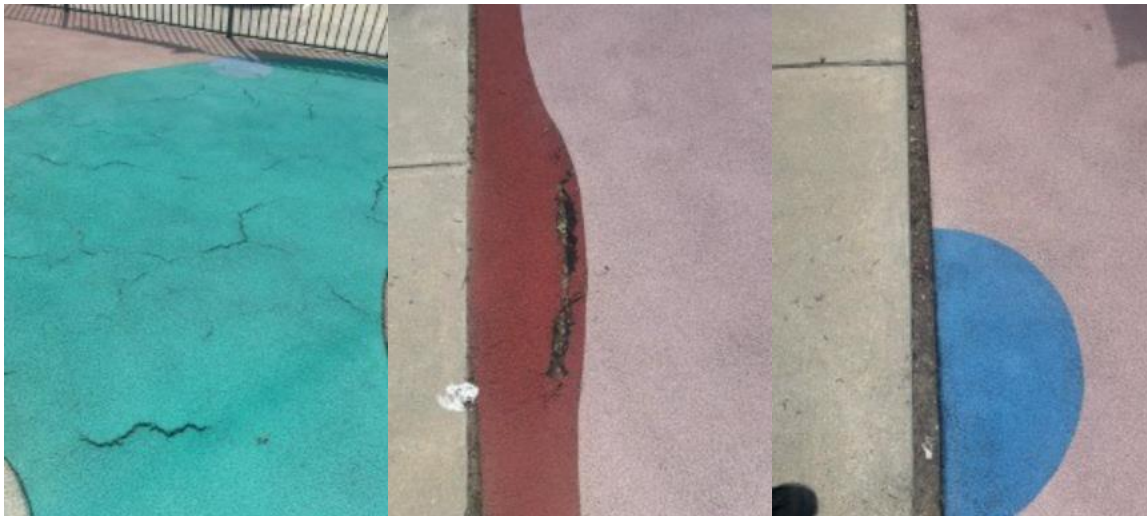
Project ID(s): FSS-SSCC-155

Scope: Replace pea gravel with full turf system



Project ID(s): FSS-LSA-196

Scope: EPDM foam safety surfacing



Project ID(s): FSS-NKK-303

Scope: Padded artificial turf



Project ID(s): FSS-KSLA-464

Scope: Turf installation (approx. 10x30 area)



Project ID(s): FSS-RFP-512

Scope: Padded turf for backyard play area



Project ID(s): FSS-RFAR-521

Scope: Artificial turf installation



Project ID(s): FSS-NGA-551, 687

Scope: Full turf coverage over dirt areas



Project ID(s): FSS-ONBA-659

Scope: Synthetic turf with mulch/rubber surfacing



Attachment 7: Lighting Improvements – Interior, Exterior, and Safety Lighting

Project ID: FSS-PKLA-19

Scope: Electrical circuits require updates; possible ballast replacement



Project ID: FSS-KCKLC-33

Scope: Replace approximately 10–15 lighting ballasts



Project ID: FSS-CMSKC-74

Scope: Install two (2) outdoor lighting fixtures in playground area; previously hardwired fixtures removed



Project ID: FSS-GBC-102

Scope: Install two (2) exterior lighting fixtures; preference for solar lighting



Project IDs: FSS-AACCC-114, FSS-AACCC-696

Scope: Install four (4) hardwired exterior lighting fixtures for second building; upgrade interior lighting including six (6) lighting structures and panel lights in three rooms (includes ballast replacement)



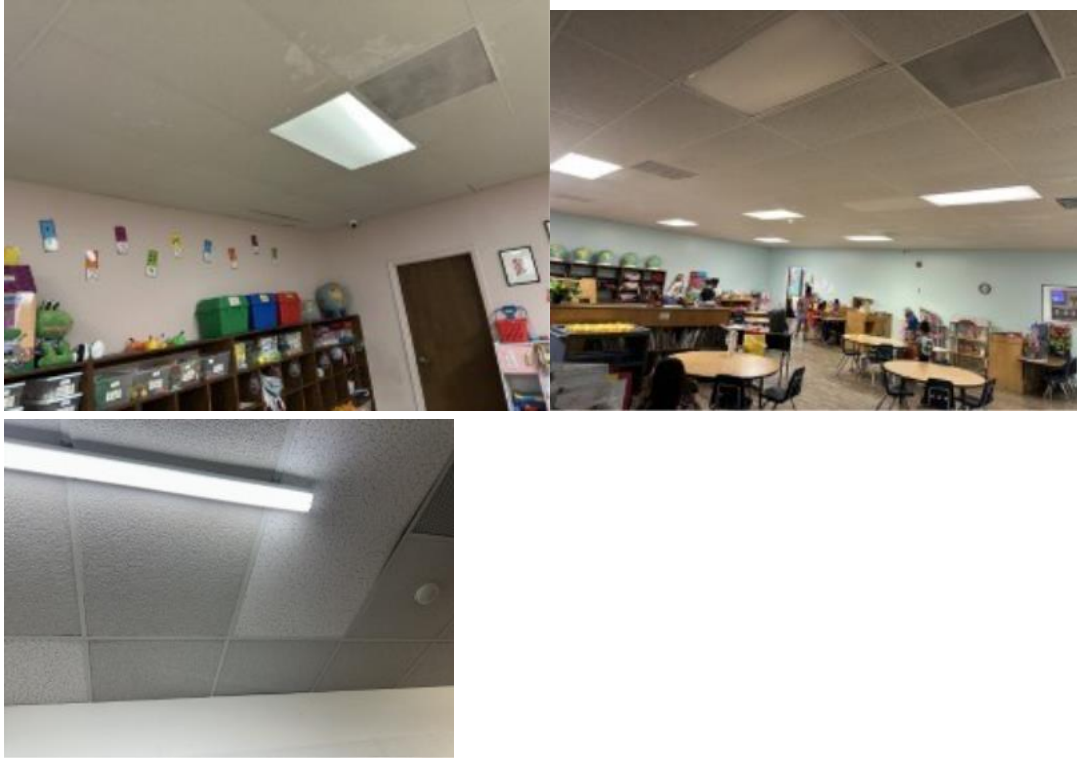
Project ID: FSS-SSCC-154

Scope: Replace three (3) existing lighting ballasts



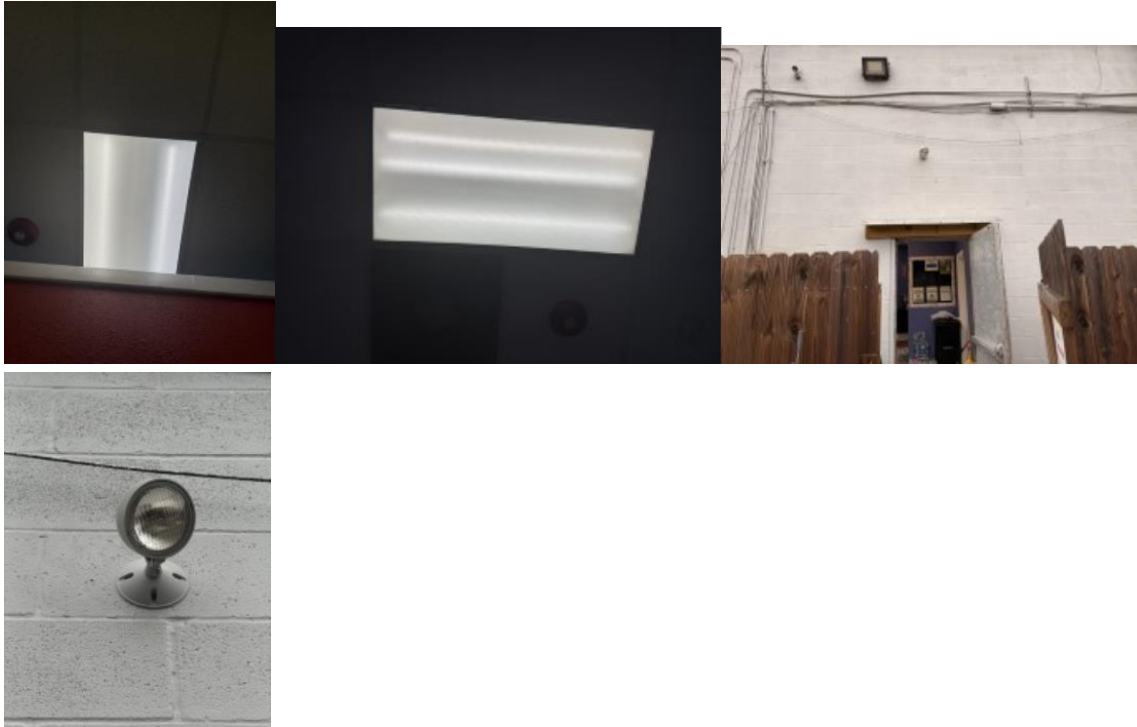
Project IDs: FSS-GGA-232, FSS-GGA-237

Scope: Replace all interior lighting (fixtures no longer manufactured); install exterior lighting at three (3) entry points



Project IDs: FSS-ABCELC-271, FSS-ABCELC-273

Scope: Install twelve (12) LED fixtures (32-watt, 48 in. Daylight Deluxe F32T8, Home Depot type); install exterior lighting for entrances and walkways



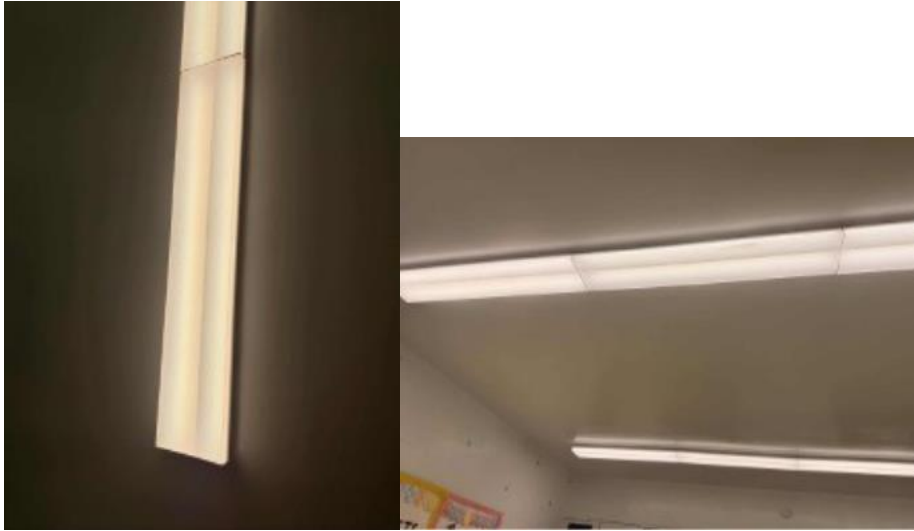
Project ID: FSS-SOHM-587

Scope: Install three (3) high-output lighting fixtures for walkways and patio areas; extended hours require enhanced visibility



Project ID: FSS-GA-613

Scope: Upgrade interior lighting across all rooms, including emergency lighting installation



Project IDs: FSS-ASRHC-710, FSS-ASRHC-711

Scope: Install four (4) movable floor lamps; install one (1) ceiling fan with lighting; install four (4) rear outdoor lighting fixtures



Attachment 8: Playground Structures and Equipment Installation

Project ID(s): FSS-KTA-50

Scope: Replace four (4) pieces of equipment, including spring toys and a circular bike



Kingdom Starters Learning Academy

Project ID(s): FSS-KSLA-62

Address: 6300 Westpark Dr. #130, Houston, TX 77057

Scope: Install new playground equipment including spinners, rockers, and standalone items; reference Dixie Playground products

Project ID(s): FSS-AACCC-115

Scope: Pre-K playground replacement; reference Dixie Playground products



Project ID(s): FSS-GGA-239

Scope: Install new climbers, slides, and balance equipment across three playground areas



Project ID(s): FSS-RFAR-296

Scope: Replace damaged outdoor playhouse



Project ID(s): FSS-NKK-305

Scope: Replace one (1) piece of playground equipment



Project ID(s): FSS-BLD-398

Scope: Install one (1) new climber and additional compliant playground equipment



Project ID(s): FSS-MLLLC-578

Scope: Replace worn or insufficient playground structures



Project ID(s): FSS-WDC-598

Scope: Install two (2) sets of climbers, slides, and balance equipment



Our New Beginnings Academy (LCCH)

Project ID(s): FSS-ONBA-660, FSS-ONBA-661

Address: 13210 Dennis Way Lane, Houston, TX 77044

Scope: Replace climbers, slides, and balance equipment (~\$1,299 reference); replace deteriorated playhouse



Project ID(s): FSS-ASRHC-712

Scope: Replace three (3) pieces of equipment



Project ID(s): FSS-CK-715

Scope: Install one (1) climbing structure for age 4; match existing equipment



Project ID(s): FSS-LCLC-741

Scope: Install small swing set, spinner, and rockers



Project ID(s): FSS-PBMK3-791

Scope: Install two (2) sets of climbers, slides, and balance equipment



Attachment 9: Sink, Plumbing, and Water Fixture Repairs

Project ID: FSS-GGA-242

Scope: Inspect and repair sink plumbing, drainage, and all sinks/toilets as needed



Project IDs: FSS-SELC-315, FSS-SELC-427

Scope: Replace kitchen cabinets and sink (3-compartment sink, 18 cabinet doors, pantry sliding door); replace six (6) bathroom sinks





Scope: Repair or replace leaking infant classroom sink



Project ID: FSS-WDC-603

Scope: Purchase and install two (2) toilets



Project ID: FSS-AFHD-618

Scope: Replace or upgrade sink faucets; replace disposal; address cabinet flooding



Project ID: FSS-KTA-645

Scope: Replace or upgrade kitchen sink system

