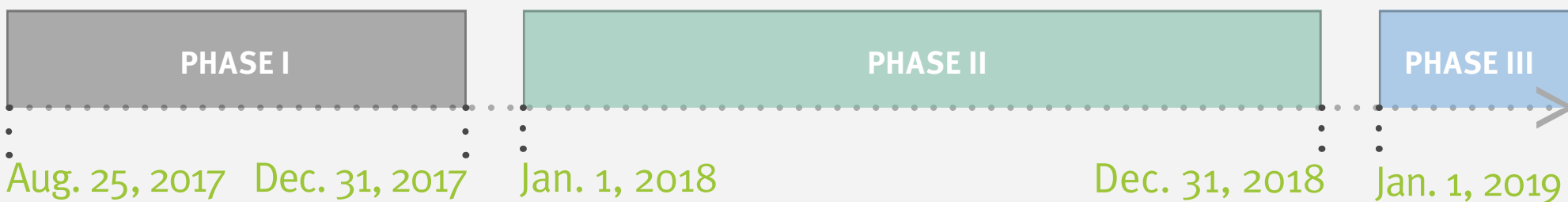


HURRICANE HARVEY RESPONSE, RECOVERY AND RESILIENCE PLAN

PHASE II: REACH THE VULNERABLE, RECOVER FROM DAMAGE, REINFORCE HIGH-QUALITY AND RESILIENCE

Greater Houston's anchor organization for early childhood education and care is linking immediate recovery assistance with long-term quality improvement initiatives to ensure the regional child care system comes back stronger than before the storm.

PHASE II TIMELINE



Hurricane Harvey makes landfall and response begins.

PHASE II RESULTS

CHILD CARE PROVIDERS ASSESSED



1,170
Phase I

2,417
Phase II

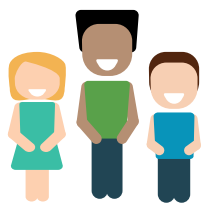


TRAININGS COMPLETED

297
Phase I

639
Phase II

CHILDREN SERVED



9,098
Phase I

30,989
Phase II

FINANCIAL ASSISTANCE ALLOCATED



\$458,500
Phase I

\$3,501,316
Phase II

ONSITE DAMAGE ASSESSMENTS COMPLETED



97
Phase I

534
Phase II

CHILD CARE PROVIDERS THAT RECEIVED FINANCIAL ASSISTANCE



155
Phase I

536
Phase II