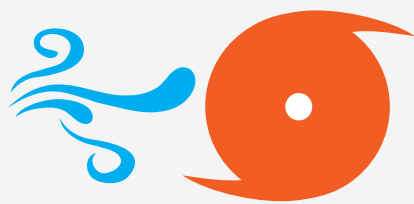


# HURRICANE HARVEY RESPONSE, RECOVERY AND RESILIENCE PLAN

## PHASE I: IMMEDIATELY RESPOND & RECOVER

Greater Houston's anchor organization for early childhood education and care is linking immediate recovery assistance with long-term quality improvement initiatives to ensure the regional child care system comes back stronger than before the storm.

### PHASE I TIMELINE

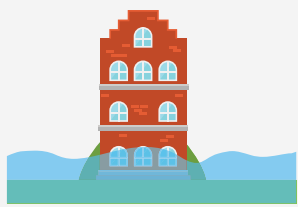


**Aug. 25**

Hurricane Harvey made landfall

**Aug. 30**

Initial survey sent to child care centers



**Sept. 12**

Began onsite assessments

**Oct. 2017**

Secured funding



**Nov. 2017**

Continued onsite assessments and initiated recovery assistance

**Dec. 2017**

### PHASE I RESULTS



**1,170**

Survey responses



**297**

Trainings completed



**9,098**

Children served



**\$458,500**

Distributed to child care providers



**9,686**

Families assisted through Find Child Care database and call center



**155**

Child care providers received financial assistance